



## USB 3.0 3-Port Hub with Gigabit Ethernet

- Club 3D USB 3.0 Hub 3 Ports with Gigabit Ethernet
- Support IEEE 802.3az (Energy Efficient Ethernet)
- Support IPV4/IPV6 pack Checksum Offload Engine (COE) to reduce CPU loading
- Slim design makes it easy to hand carry.
- Support wake-on-LAN function
- Support Green Ethernet
- USB bus powered 3.3V/500mA
- It works with Windows XP, Vista, 7, 8, 8.1, 10, Mac OS X



CSV-1430 MANUAL

### Introduction

USB 3.0 3-Port hub with Gigabit Ethernet adapter is compliant with USB 2.0 specification. It is two applications in the product. With USB interface, you can access USB 3.0 Hub and Giga Ethernet at the same time. Stylish design and slim type make it easy to carry.

### Features

- USB 3.0 Giga LAN with 3 ports USB 3.0 HUB
- Small design make users easy hand carry.
- Support wake-on-LAN function
- Support Green Ethernet
- Support IEEE 802.3az(Energy Efficient Ethernet)
- Support IPV4/IPV6 pack Checksum Offload Engine(COE) to reduce CPU loading
- It works with Windows® and Mac OS®
- Bus-powered

### Package Contents

- USB 3.0 3-port Hub with Gigabit Ethernet Adapter
- Quick Installation Guide

### System Requirements

- PC with USB port.
- Laptop with USB port.
- One of the following operation systems: Windows® & Mac OS®



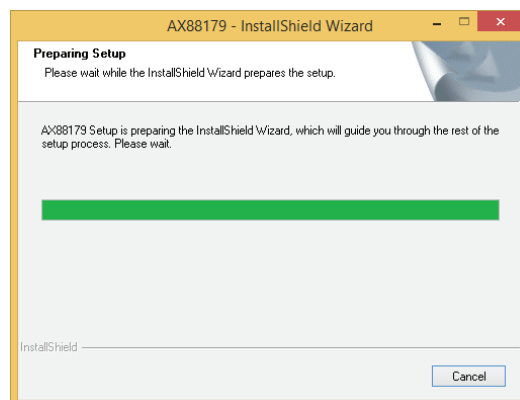
### Driver Installation on Windows™ and Mac OSX®

**Caution: DO NOT connect the Ethernet adapter to your computer before you install the driver. You will be instructed to do so later.**

1. Download the latest driver from the Club-3D website, [www.club-3d.com](http://www.club-3d.com). (download tab).  
Click Run **Setup.exe** to start the installation



2. When you click **setup.exe**, you could see the screen as below



3. Click Finish to complete Ethernet Driver.

Now the installation is completed. You can connect the adapter to a network device by an Ethernet cable:

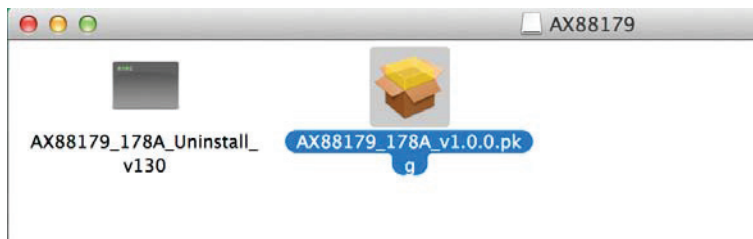
1. Connect an Ethernet cable to the Ethernet port on the adapter.
2. Connect the other end of the Ethernet cable to your network hub, switch or router.

The Link LED should light up green to indicate a proper physical connection between the adapter and the network. If the Link LED doesn't light up, please verify the cable connections between all the network devices.

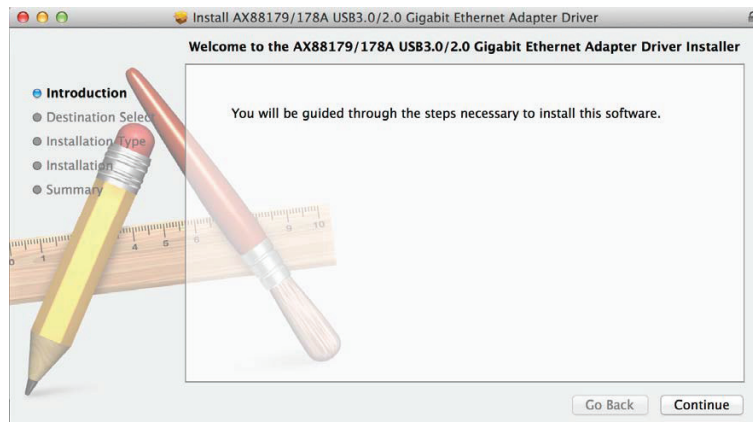
\*Actual strings depend on your operation system. These screen shots are from Windows® 8.1 and might vary slightly for each operation system.

### On Mac OS®

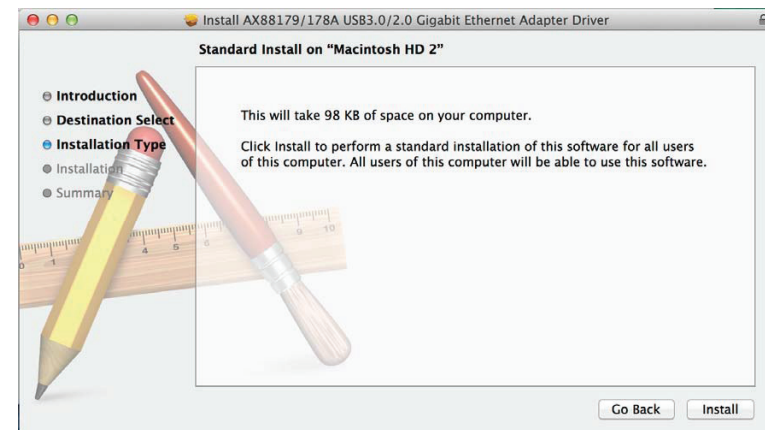
1. Download the latest driver from the Club-3D website, [www.club-3d.com](http://www.club-3d.com). (download tab).  
Double-click <AX88179 .pkg> to launch the setup procedure.



2. When the **Install AX88179/178A Ethernet Adapter Driver** screen appears, please select **Continue**.



3. When the screen below appears, please click **Install** to install

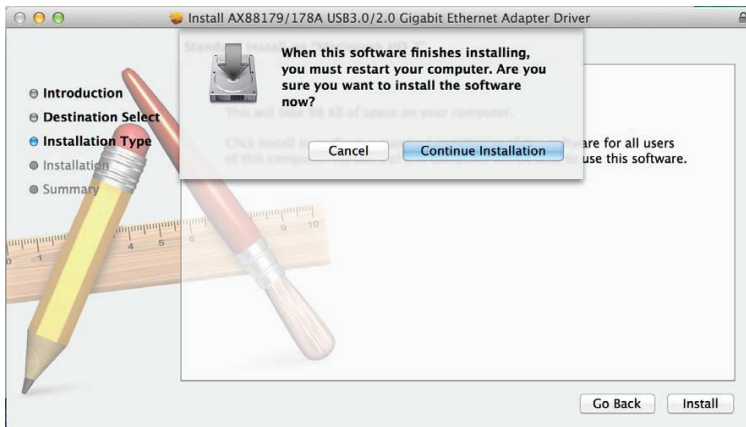


4. Please enter your **password** as prompted, and click **Install Software** to start the ..  
installation.

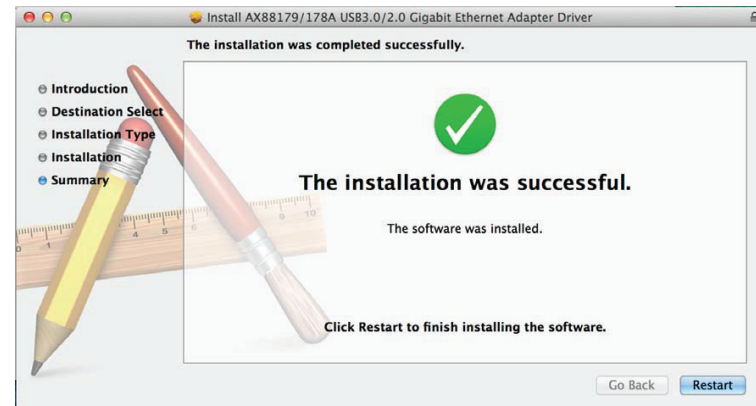




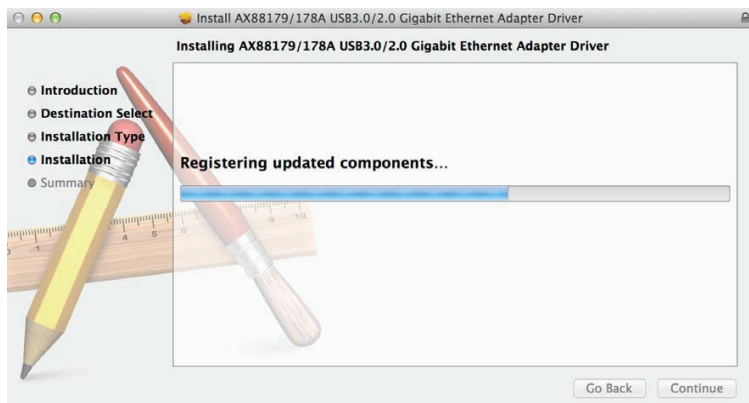
5. When the screen below appears, please click Continue Installation.



7. When the driver is successfully installed, click **Restart to restart** your computer



6. It will take a while to install the driver.



\*Actual strings depend on your operation system. These screen shots are from Mac OS® v10.9 and might vary slightly for each operation system.